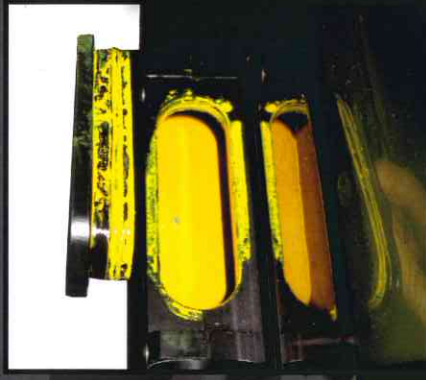


TRESU FlexiPrint Reservoir

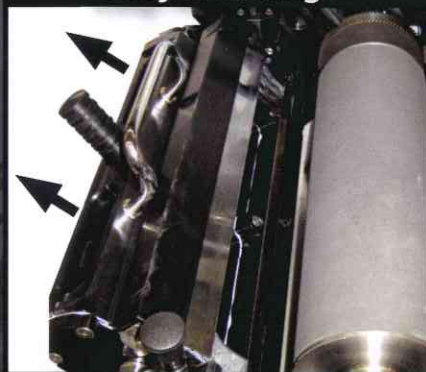
Chamber Doctor Blade System



Easy Load



Easy Handling



Easy Lock/Unlock



- For ink applications
- No circulation pump necessary
Ink is kept in the chamber reservoir
- Less ink consumption
- Fast job change
- TRESU E-Line clamping system for fast doctor blade change (patent)
- TRESU Seal (patent)
- Significantly increases production speed
- Option: Additional spare chamber for even faster job change

Technical Specifications

Profile:	D2E
Anilox Ø / Width:	Ø=64-150 mm / Lmax=800 mm
Speed:	Up to 300 m/min
Clamping:	E-Line quick change system
Ink:	UV Flexo ink

- the printer's choice -